

Balanced and Sustainable Regional Development: Possibilities for Implementation through Rural Development Tools

ANKA LISEC, PhD

University of Ljubljana, Faculty of Civil and Geodetic Engineering
Ljubljana, Slovenia

E-mail: anka.lisec@fgg.uni-lj.si



Photos: Anka LISEC

Alpine region



CHALLENGES:

- ❑ Economic globalization
- ❑ Demographic trends
- ❑ Vulnerability to climate change
- ❑ Energy supply
- ❑ Specific geograph. position

....



Photos: Anka LISEC

EU-Strategy for the Alpine Region (EUSALP)

...

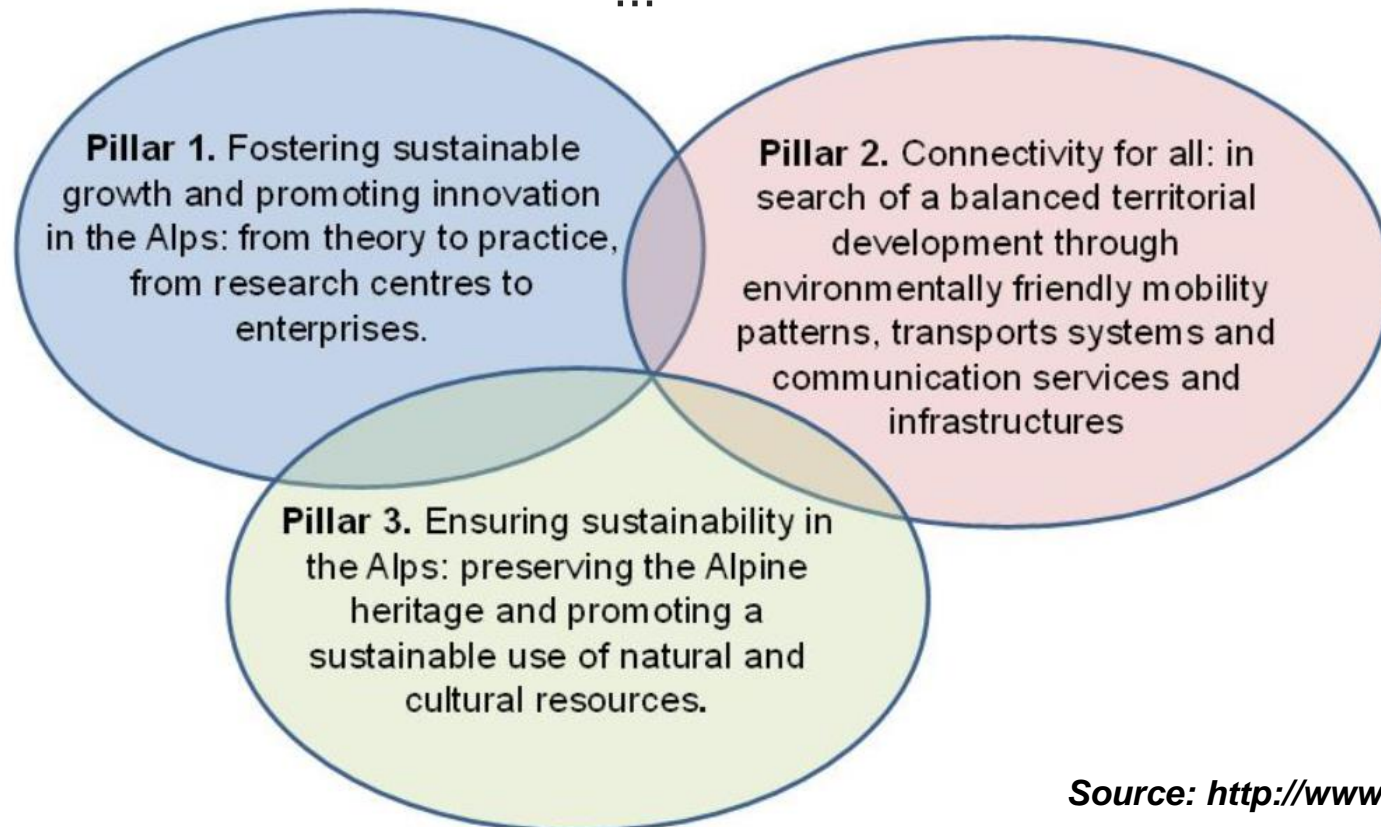
aims at ensuring mutually beneficial interaction between
the **mountain regions** at its core

and

the **surrounding lowlands** and **urban areas**,

flexibly taking into account the functional relationships existing between
these areas

...



IT IS ALL ABOUT THE LAND

Is de land, de land, de land
Cause anyhow you check it
Eat food raw or open a can
Is from **the land** you get it.
You paper and pencil, pot and pan
Calabash, coalpot, everyt'ing we got
Is from **de land** we make it
Is from **de land** we take it
It eh he-land, or she-land or me-land
Is we-land, is we-land, is we-land.

(I. Williamson)



Photos: Anka LISEC

From traditional land consolidation ...



Source: Liseć, Preska



Source: Niko Mušič



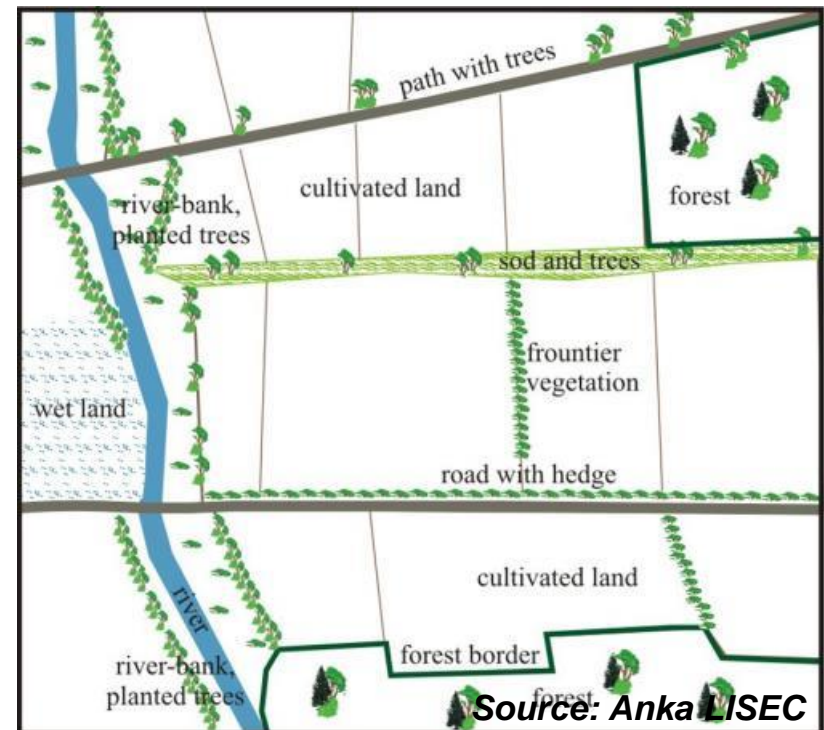
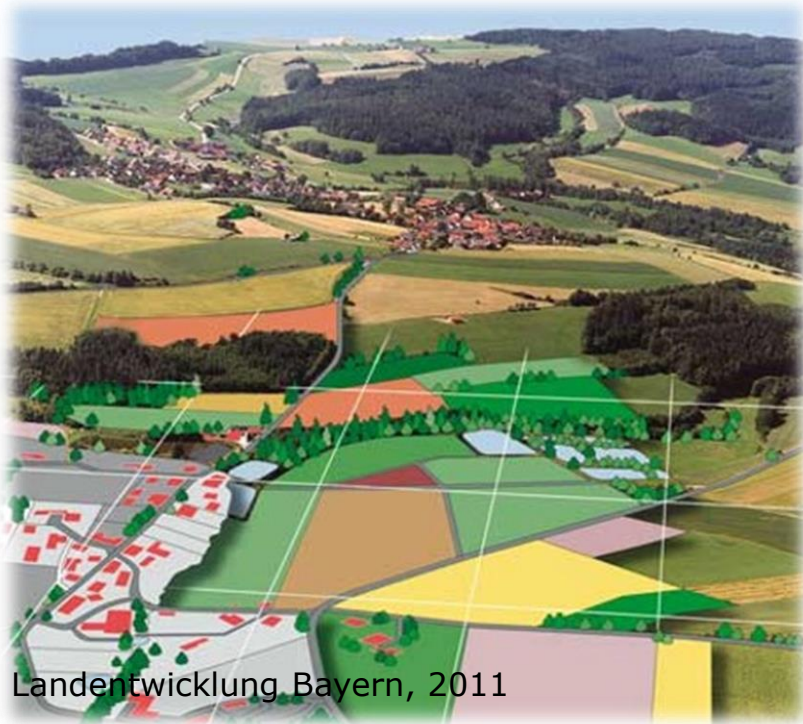
... to comprehensive development instrument



Photos: Anka LISEC
Other sources: Geodetska družba d.o.o.

Land consolidation as development instrument

In addition to the efforts aimed at making agriculture and forestry more competitive through a comprehensive **reallocation process**, improvement of **road** and **drainage networks**, **landscaping, environmental management, conservation projects, village renewal** and other **functions of rural and peri-urban areas** are implemented by land consolidations.



SMART, SUSTAINABLE & INCLUSIVE



Specific – targeting (a) specific area(s) for improvement

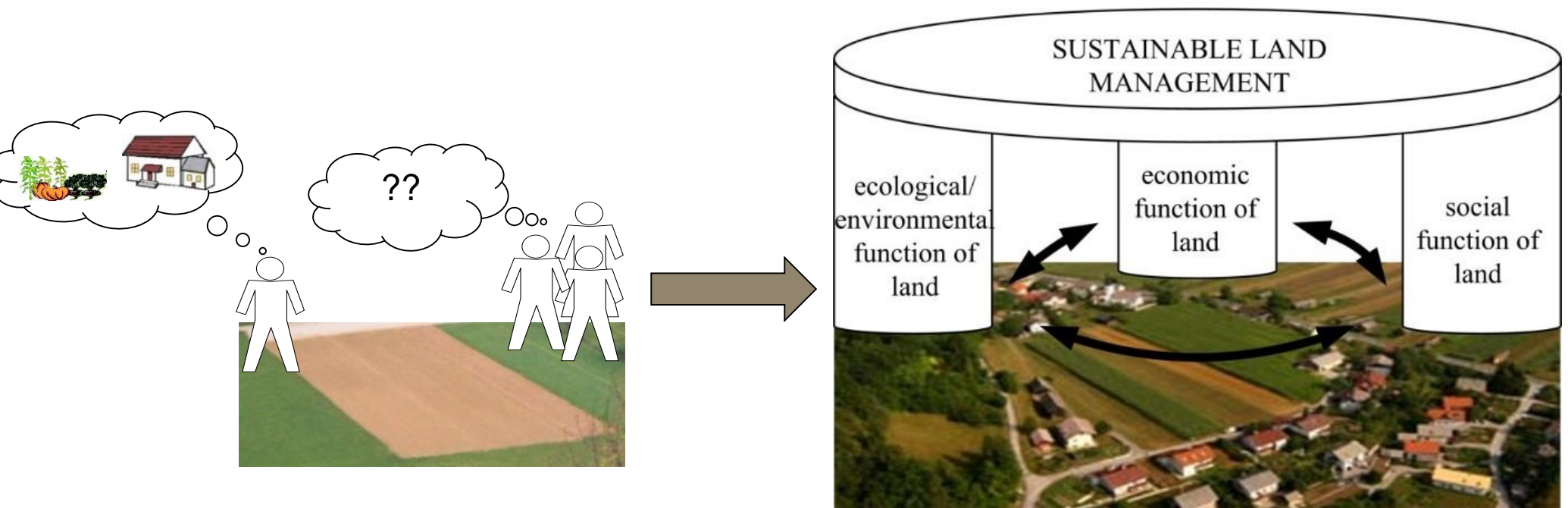
Measurable – quantifying indicators of progress

Achievable, Agreed, Action-oriented

Realistic – defining what results can realistically be achieved

Time-related – specifying when the result(s) can be achieved

SMART, SUSTAINABLE & INCLUSIVE

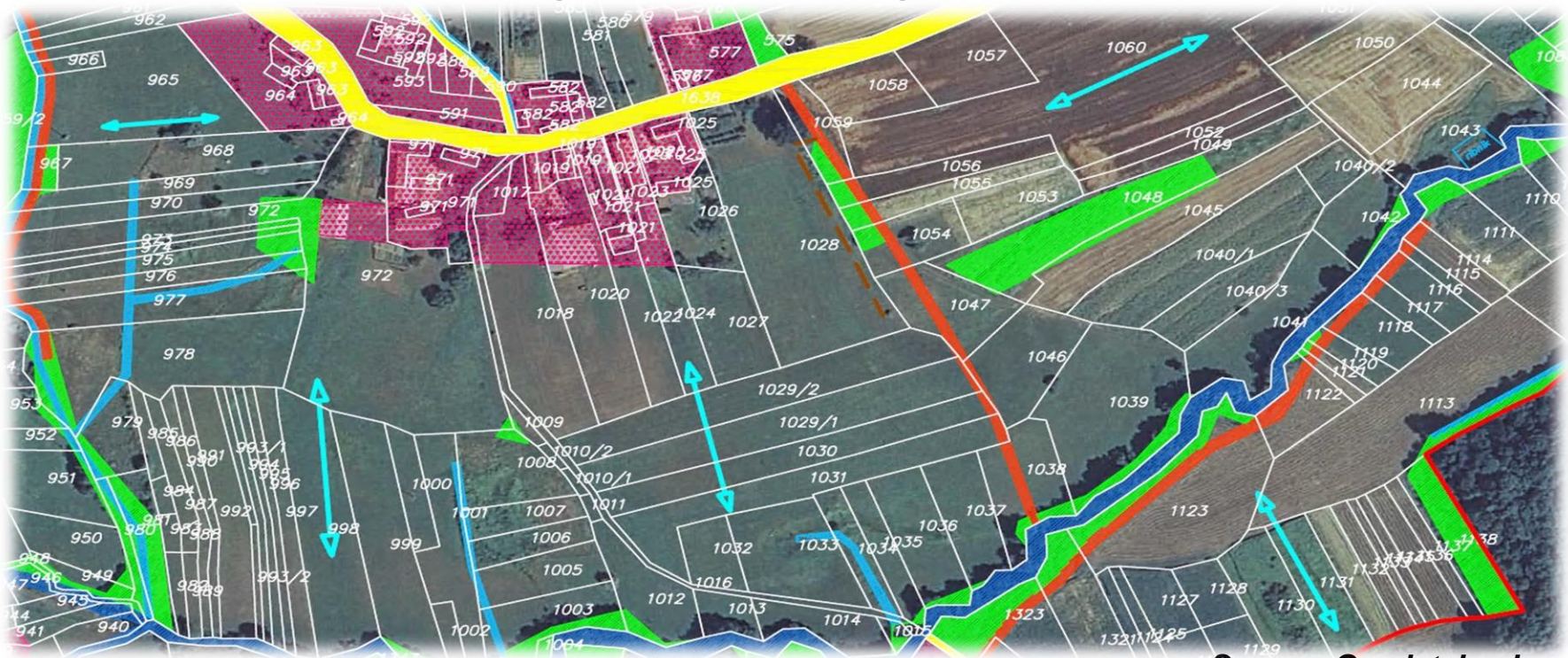


... following the guidelines of **sustainable development**:
the kind of development that meets the needs of the present without
compromising the ability of future generations to meet their own
needs.

SMART, SUSTAINABLE & INCLUSIVE



Participation, integrated planning, bottom-up approach!



Source: Geodetska družba d.o.o.

Balanced and Sustainable Regional Development: Possibilities for Implementation through Rural Development Tools

ANKA LISEC, PhD

University of Ljubljana, Faculty of Civil and Geodetic Engineering
Ljubljana, Slovenia

E-mail: anka.lisec@fgg.uni-lj.si



**Rural Development Tools (Land Consolidations)
for
A SMART, SUSTAINABLE & INCLUSIVE DEVELOPMENT**

Photo: Anka LISEC